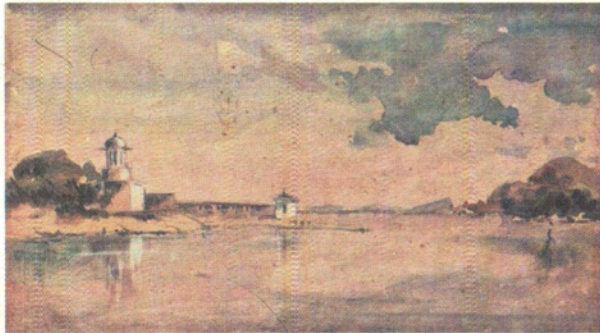


# GOPAL GHOSE

*A Jubilant Quest for the Chromatic*

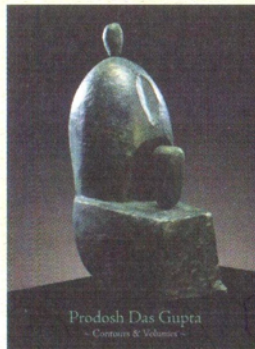
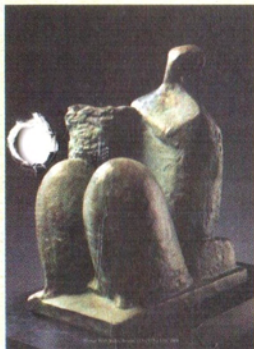
*Curated by Dr. Sanjoy Kumar Mallik*



## PRODOSH DASGUPTA and SARBARI ROY CHOUDHURY

*Contours & Volumes*

*Curated by Dr. Nandini Ghosh*



Prodosh Das Gupta  
— Contours & Volumes —



Sarbari Roy Choudhury  
— Contours & Volumes —





राष्ट्रीय आधुनिक  
कला संग्रहालय  
NATIONAL GALLERY  
OF MODERN ART

**National Gallery of Modern Art, Mumbai**

Ministry of Culture, Government of India

&

**Akar Prakar**

cordially invites you to the opening of the exhibitions

**GOPAL GHOSE**

**A Jubilant Quest for the Chromatic**

*Curated by Dr. Sanjoy Kumar Mallik*

&

**PRODOSH DASGUPTA &  
SARBARI ROY CHOUDHURY**

**Contours & Volumes**

*Curated by Dr. Nandini Ghosh*

**Smt. Pheroza Godrej**

Chairperson, Advisory Committee, NGMA, Mumbai

has kindly consented to inaugurate the Exhibition

on

Tuesday, 24th September, 2013 at 6 pm

at National Gallery of Modern Art

Sir Cowasji Jahangir Public Hall

M G Road, Fort Mumbai- 400 032

The exhibition will be on view till 23rd October, 2013

daily from 11 am to 6 pm

(closed on Mondays & National Holidays)

RSVP: 022 22881969 /70

## Programmes

All programmes will start at 5:30 pm at the NGMA Auditorium

**Saturday, 28th September 2013** : Sarod recital by Saugata Roy Choudhury accompanied by Uday Ramdass on Tabla

**Friday, 4th October 2013** : ..... Movies on Sarbari Roychoudhury

**Saturday, 12th October 2013** : .... Movies on Prodosh Dasgupta

**Thursday, 17th October 2013** : .... The curators, Dr. Sanjoy Kumar Mallik and Dr. Nandini Ghosh discuss the featured artists and their art

### Gopal Ghose – A jubilant quest for the chromatic

Gopal Ghose, the legendary painter, trained in the style of art known as the neo-Bengal School, was one of the path breakers of modern Indian art, and is remembered for his dedication and historical contribution in shaping the journey and direction of modern art in India. His works of art, with a wide range and diversity, is marked by his signature style fashioned by brilliant passages of pure hue and elan of flourish in the calligraphic line. His creative genius, covering a vast Indian landscape, is evident in the range of works, displayed in the exhibition. Beginning with a pictorial language that was inspired to a great extent by the Bengal School diction, his personal language transformed during the nineteen forties. His sketches of the infamous man-made famine of 1943 and the paintings executed during his association with the collective Calcutta Group testify his shift to a more contextually relevant pictorial diction that was oriented towards a boisterous exploration of the chromatic.

### Prodosh Dasgupta and Sarbari Roy Choudhury : "Contours & Volumes"

The exhibition 'Contours and Volumes', at NGMA Mumbai will be a fitting tribute to the two famed Indian sculptors. The exhibition, consisting of more than 100 works of these two artists, was created on the occasion of the centenary year of eminent sculptor Prodosh Dasgupta and the 80th year of sculptor Sarbari Roy Choudhury and exhibited at Lalit Kala Akademi in New Delhi. It derives its name, from the ingenuity of the two sculptors in confabulating sculptures around the plasticity of form. It presents sculptures that range across a variety of dimensions from the classical human-figure as in Prodosh Das Gupta's 'Surya Mukhi' to that of the table-sized formats in the works of Sarbari Roy Choudhury.



राष्ट्रीय आधुनिक  
कला संग्रहालय  
NATIONAL GALLERY  
OF MODERN ART



P 238 Hindustan Park  
Kolkata 700 029  
P: +91 33 2464 2617  
www.akarprakar.com

### राष्ट्रीय आधुनिक कला संग्रहालय

सर कावसजी जहांगीर पब्लिक हॉल, महात्मा गांधी रोड, फोर्ट, मुंबई-400 032

प्रदर्शनी: प्रतिदिन प्रातः 11.00 बजे से 6.00 बजे तक खुली रहेगी (सोमवार एवं राष्ट्रीय अवकाश के दिन बंद रहेगा।)

### NATIONAL GALLERY OF MODERN ART

Sir Cowasji Jehangir Public Hall, Mahatma Gandhi Road, Fort, Mumbai - 400 032

Ph.: +91 022-2288 1969 / 1970 Telefax : +91 022-2285 2457

E-mail: ngma.mumbai@gmail.com, www.ngmaindia.gov.in

Exhibition: Every Day 11.00am to 6.00pm (Closed on Mondays & National Holidays)

Supported by:  
The Piramal Art Foundation







