

National Gallery of Modern Art  
Government of India  
Jaipur House, New Delhi-110003.

File No. F. 150003/2014/NGMA

Dated: November 26, 2014

**NOTICE INVITING QUOTATIONS**

The Director, National Gallery of Modern Art (NGMA), New Delhi invites quotation for supply and installation of furniture and work station etc. from the original manufacturer or their authorized suppliers.

- (1) The intending tenderers must produce copies of registration under DVAT Act 2004 and furnish their TIN number along with the bids.
- (2) The tenderer should have a local office in NCR Delhi and should be fully equipped to provide after sales service for the same.
- (3) Bidder should have annual turnover of minimum Rs. 05 Crores during the last three financial years. It should be attested and certified by a registered Chartered Account.
- (4) The successful tenderer will have to supply at site inclusive of cartage.
- (5) **Warranty:** The equipments supplies shall carry warranty period of at-least 3 years from the date of supply.
- (6) Earnest Money Deposit (EMD) of Rs.20,000.00 (Rs. Twenty Thousand Only.) is to be deposited by Demand Draft/Pay Order drawn in the name of "D.D.O, National Gallery of Modern Art" payable at New Delhi should be submitted along with the Tender. Earnest Money Deposit shall be returned to unsuccessful tenderers
- (7) The successful bidder shall have to supply and Install the furniture within 2 weeks from the date of the supply orders.
- (8) Copies of tender forms can also obtained from the Administrative Officer, National Gallery of Modern Art, Jaipur House, New Delhi, at cost of Rs. 500/- can be seen from Central Purchase Portal (<http://eprocure.gov.in>) and NGMA website [www.ngmaindia.gov.in](http://www.ngmaindia.gov.in).
- (9) The quotations in sealed covers will be received up-to 04 December, 2014.
- (10) Quotations should be valid at-least for six months.
- (11) The Director (NGMA) reserves the right to accept the tenders in totality or in parts thereof. The Director (NGMA) also reserves the right to accept or reject the tenders without assigning any reasons.



(S.K. Misra)  
Administrative Officer

Encl: Terms & Conditions (Annexure-'A')  
Specification (Annexure-'B')

NATIONAL GALLERY OF MODERN ART  
Jaipur House, New Delhi-110003

GENERAL TERMS AND CONDITIONS FOR THE WORK OF SUPPLY,  
INSTALLATION, OF THE FURNITURE AND WORKSTATION ETC., AT NGMA,  
NEW DELHI

1. The Tenderer shall be required to take up the work of Supply, Installation, of the furniture and workstation etc, at NGMA, New Delhi, on the basis of Two Bid system: Tenderer shall submit bid in two separate envelopes duly marked Technical bid & Price bid in one cover envelope. Tenderer should have their own manufacturing unit with powder coating plant or he should be an authorized supplier of the original manufacturer. Sample shall be submitted along with the tender. Tender shall be rejected without samples. Price bid of only successful Tenderer shall be opened who qualified technical bid. All the iron equipment should be powder coated.
2. Price:  
  
The rates quoted/indicated shall include cost of materials and Installation, required for the work as per the enclosed specification and their supply, installation charges. The V.A.T./C.S.T./Service/Excise/Service Tax and other taxes/levies to be imposed on the rate shall be clearly and separately mentioned. Rate quoted shall be firm and fixed for the entire period of execution of the Work Order and no escalation of rate on any ground whatsoever shall be applicable. Copies of Registration certificates of VAT/Excise/Service Tax etc. may be submitted with Tender documents.
3. Time of completion:  
  
Time is the essence of this contract. The time for supply, installation, testing and commissioning of aforesaid job is 2 weeks from date of placement of work order. Order is liable to be cancelled if the aforesaid time schedule is not strictly followed, NGMA shall be entitled to claim appropriate liquidated damages in such a case. The decision of NGMA in this regard shall be final and binding on the successful tenderer.
4. Payment Terms  
  
No advance payment shall be made by NGMA under any circumstances. Payment shall be released after satisfactory completion of the entire work within 15 (fifteen) days from the date of receipt of Invoice/Bill duly supported by receipted challan and satisfactory inspection/work completion certificate issued by the competent authority of NGMA.
5. T.D.S. shall be deducted at source, if applicable, from the bill of firm as per prevailing Government Rules.
6. Defect Liability Period  
  
The Defect Liability /Warranty period shall be at least **3 years (three years)** from the date of completion of supply and installation. The successful tenderer (s) shall be responsible for all defects for a period of **3 years** from the date of completion of the supply and installation. The successful tenderer(s) shall rectify/ replace the defect/defective parts within one week the specified time without any cost whatsoever

-3-

deposit at 10% of contract amount shall be furnished by the successful tenderer in the form of Bank Guarantee favouring deposit of furnished by the tenderer. The Bank guarantee should be valid for 3 years beyond three years of warranty period. No interest will be paid on the Security Deposit.

7. Bad quality furniture/material will not be accepted and if found at any stage /time shall be liable to be rejected and should be replaced by the successful tenderer(s) at his cost as per specifications and directions given by the authorized representatives of NGMA.
8. Specification of the items under tender are enclosed for guidance. However, if any, ambiguity in the specification is detected, it shall be promptly brought to the notice of NGMA for clarification. The successful tenderer(s) without written approval of NGMA shall make no deviation from the approved specifications.
9. The NGMA does not bind itself to accept the lowest tender, and reserves the right to accept or reject any or all tenders wholly or partially without assigning any reason whatsoever.
10. The successful tenderer(s) shall obtain necessary trade and other licenses as may be required to carry out the tendered job and shall also be responsible for compliance of all rules and regulations which may be in force from time to time by the appropriate authority at his/their own cost. Original manufacturer should possess proper permission of the appropriate pollution control committee/ Board for manufacturing unit and furnish proof thereof.
11. Authorization letter from the original equipment manufacturer should be made available for quoting for their product, technical compliance to specification and or providing after sales support.
12. The warranty card to be duly signed by the manufacturer.
13. The warranty should be comprehensive and will start from the date of installation of the items.
14. Upgradation if any at the time of supply should be indicated and latest upgradation model to be supplied. However, the latest upgrade should comply with all the specifications mentioned in the tender.
15. The tenderer should quote for the original furniture only. Refurnished/re-manufactured items are not acceptable. The supplier has to provide documentary evidence by a certificate issued by the manufacturer stating the serial number and other details of the items with the manufacturing date etc., in order to ascertain genuineness of the products installed.
16. The tenderer has to submit sample for each tendered item for approval of competent authority.
17. The tenderers should be having experience of ten years or more in the field of interior designing/ installing of complete system of office furniture in Government Sector or similar organization. Supporting documents in this regard may be enclosed with the bids.
18. The successful tender has to supply of furniture etc. Own their own cost

## SPECIFICATION

Annexure -B

S.No	Description
	<b>Modular Workstations for 7 persons Refer Annexure -1 for reference</b>
1a	Worktop of size 1500x750x25mm (width) made of 25mm prelaminate particle board with flat edges duly sealed with 2mm thick pvc edge banding tape. The worktop is supported with cantilever brackets made of MS steel duly powder coated. Worksurface is also provided with ABS wire manager of 50mm dia.
1b	Side unit of size 1050x450x750mm (width) having top made of 25mm prelaminate particle board with flat edges duly sealed with 2mm thick pvc edge banding tape, and base made of 18mm prelaminate particle board duly edge banded. It is having 3 drawer unit & one open shelf.
1c	Keyboard pull out tray made of 18 mm thick prelaminate particle board conforming to IS 12823 grade - II type- II of size 600 x 450 mm
1d	Cable end in 18mm prelaminate particle board with flat edges duly sealed with 2mm thick pvc edge banding tape.
1e	Vertical modular partition panel laminated of 72mm thick and 1050mm ht. Basic structure is composed of rolled steel vertical and horizontal members to make the basic framework (skeletal) of partition. Partition has a cable raceways provided at the bottom as well as at any height in the partition as per the requirement. It has also facility to fix electrical switch / sockets as the operable plates 12mm thick pre laminated particle board are used as snap on panels in the partition. Structure can be configured into any shape in 90 degree angle. All steel components are duly powder coated.
	<b>Vertical Member</b> Made of cold rolled square steel sections of 38mm sides and of 18 gauge at a maximum interval of 1200mm C/C both ways. All members shall have necessary dye-punch/cutouts for mounting snap on double skinned 12mm, thick pre laminated particle board panels & accessories. Leveler screws duly fitted, if required. All steel components shall be treated for anti rust, 9 tank phosphating treatment followed by epoxy polyester powder coating 50 microns thick, performed at 200 degrees centigrade for scratch resistant finish.
	<b>Horizontal Member</b> Made of a combination of cold rolled square steel sections of 38mm sides and of 18-gauge, at a maximum interval of 1200mm C/C both ways, it shall have sharp C-sections of matching size and gauge to complete frame structure of required spans in conjunction with the vertical members. All steel components shall be treated for anti rust, 9 tank phosphating treatment followed by epoxy polyester powder coating 50 microns thick, performed at 200 degrees centigrade for scratch resistant finish.
	<b>Cable Trays</b> Made of cold rolled steel of 20-gauge. It shall be double walled, running mutually adjacent at the bottom of a partitions panels, mounted on hinges and having snap on covers to accommodate all wiring and cabling. Provision shall be made to take out wires and cable at various height from the basic frame structure. All steel components shall be treated for anti rust, 9 tank phosphating treatment followed by epoxy polyester powder coating, 50 microns thick, performed at 200 degrees centigrade for scratch resistant finish.

	<p><b>Trim Cover</b> Made of Aluminum of 16 gauge. The vertical and horizontal snap on cappings shall cover the joints and portion edges, so as to provide, continuity to the complete partitions system.</p> <p>1220x1050x72mm (hwxwt) 1220x750x72mm (hwxwt) 1220x450x72mm (hwxwt)</p>
2	<p><b>Backdrop behind workstation Refer Annexure -2 for reference</b> Backdrop having top made of 25mm prelaminate particle board with flat edges duly sealed with 2mm thick pvc edge banding tape, and base made of 18mm prelaminate particle board duly edge banded with 18mm thick PLB shutters. Refer Annexure - 2 for reference.</p> <p>750x450x1450mm (wxdxh) 900x450x750mm 450x450x750mm</p>
3	<p><b>Steel Cabinet at store Refer Annexure -3 for reference</b> Steel Cabinet of size 78"x30"x19" (hwxwt) with four fixed shelves and transparent glass doors. Body will be of 0.8mm thick. The door shall be 1.25mm thick with transparent glass lock of 6 levers with stainless steel. The finish shall be anti-rust treated and duly powder coated for smooth and long lasting finish. Refer Annexure - 3 for reference.</p>
	<p><b>Modular Workstations for 5 persons at a/c admin section Refer Annexure -1 for reference</b></p>
4a	<p>Worktop of size 1500x750x25mm (wxdxt) made of 25mm prelaminate particle board with flat edges duly sealed with 2mm thick pvc edge banding tape. The worktop is supported with cantilever brackets made of MS steel duly powder coated. Worksurface is also provided with ABS wire manager of 50mm dia.</p>
4b	<p>Side unit of size 1050x450x750mm (wxdxh) having top made of 25mm prelaminate particle board with flat edges duly sealed with 2mm thick pvc edge banding tape, and base made of 18mm prelaminate particle board duly edge banded. It is having 3 drawer unit &amp; one open shelf.</p>
4c	<p>Keyboard pull out tray made of 18 mm thick prelaminate particle board conforming to IS 12823 grade - II type-II of size 600 x 450 mm</p>
4d	<p>Gable end in 18mm prelaminate particle board with flat edges duly sealed with 2mm thick pvc edge banding tape.</p>
4e	<p>Vertical modular partition panel laminated of 72mm thick and 1050mm ht. Basic structure is composed of rolled steel vertical and horizontal members to make the basic framework (skeletal) of partition. Partition has a cable raceways provided at the bottom as well as at any height in the partition as per the requirement. It has also facility to fix electrical switch / sockets as the operable plates. 12mm thick pre laminated particle board are used as snap on panels in the partition. Structure can be configured into any shape in 90 degree angle. All steel components are duly powder coated.</p>

#### Vertical Member

Made of cold rolled square steel sections of 38mm sides and of 18 gauge at a maximum interval of 1200mm C/C both ways. All members shall have necessary dry-punches/outs for mounting snap on double skinned 12mm, thick pre laminated particle board panels & accessories. Leveller screws duly fitted. If required. All steel components shall be treated for anti rust, 9 tank phosphating treatment followed by epoxy polyester powder coating 50 microns thick, performed at 200 degrees centigrade for scratch resistant finish.

#### Horizontal Member

Made of a combination of cold rolled square steel sections of 38mm sides and of 18-gauge, at a maximum interval of 1200mm C/C both ways. It shall have sharp C-sections of matching size and gauge to complete frame structure of required spans in conjunction with the vertical members. All steel components shall be treated for anti rust, 9 tank phosphating treatment followed by epoxy polyester powder coating 50 microns thick, performed at 200 degrees centigrade for scratch resistant finish.

#### Cable Trays

Made of cold rolled steel of 20-gauge. It shall be double walled, running mutually adjacent at the bottom of a partitions panels, mounted on hinges and having snap on covers to accommodate all wiring and cabling. Provision shall be made to take out wires and cable at various height from the basic frame structure.

All steel components shall be treated for anti rust, 9 tank phosphating treatment followed by epoxy polyester powder coating, 50 microns thick, performed at 200 degrees centigrade for scratch resistant finish.

#### Trim Cover

Made of Aluminum of 16 gauge. The vertical and horizontal snap on cappings shall cover the joints and partition edges, so as to provide, continuity to the complete partitions system.

1220x1050x72mm (hwxwt)

1220x750x72mm (hwxwt)

#### Modular Workstations for 3 persons at purchase section Refer Annexure -1 for reference

- 5a Worktop of size 1500x750x25mm (wxhxd) made of 25mm prelaminate particle board with flat edges duly sealed with 2mm thick pvc edge banding tape. The worktop is supported with cantilever brackets mad eof MS steel duly powder coated. Worksurface is also provided with ABS wire manager of 50mm dia.
- 5b Side unit of size 1050x450x750mm (wxhxd) having top made of 25mm prelaminate particle board with flat edges duly sealed with 2mm thick pvc edge banding tape, and base made of 18mm prelaminate particle board duly edge banded. It is having 3 drawer unit & one open shelf.
- 5c Keyboard pull out tray made of 18 mm thick prelaminate particle board conforming to IS 12523 grade - II type- II of size 600 x 450 mm
- 5d Gable end in 18mm prelaminate particle board with flat edges duly sealed with 2mm thick pvc edge banding tape.

- 5e Vertical modular partition panel laminated of 72mm thick and 1050mm ht. Basic structure is composed of rolled steel vertical and horizontal members to make the basic framework (skeletal) of partition. Partition has a cable raceways provided at the bottom as well as at any height in the partition as per the requirement. It has also facility to fix electrical switch / sockets as the operable plates. 12mm thick pre laminated particle board are used as snap on panels in the partition. Structure can be configured into any shape in 90 degree angle. All steel components are duly powder coated.

**Vertical Member**

Made of cold rolled square steel sections of 38mm sides and of 16 gauge at a maximum interval of 1200mm C/C both ways. All members shall have necessary dye-punches/cuts for mounting snap on double skinned 12mm, thick pre laminated particle board panels & accessories. Leveler screws duly fitted, if required. All steel components shall be treated for anti rust, 9 tank phosphating treatment followed by epoxy polyester powder coating 50 microns thick, performed at 200 degrees centigrade for scratch resistant finish.

**Horizontal Member**

Made of a combination of cold rolled square steel sections of 38mm sides and of 16-gauge, at a maximum interval of 1200mm C/C both ways, it shall have sharp C-sections of matching size and gauge to complete frame structure of required spans in conjunction with the vertical members. All steel components shall be treated for anti rust, 9 tank phosphating treatment followed by epoxy polyester powder coating 50 microns thick, performed at 200 degrees centigrade for scratch resistant finish.

**Cable Trays**

Made of cold rolled steel of 20-gauge. It shall be double walled, running mutually adjacent at the bottom of a partitions panels, mounted on hinges and having snap on covers to accommodate all wiring and cabling. Provision shall be made to take out wires and cable at various height from the basic frame structure.

All steel components shall be treated for anti rust, 9 tank phosphating treatment followed by epoxy polyester powder coating, 50 microns thick, performed at 200 degrees centigrade for scratch resistant finish.

**Trim Cover**

Made of Aluminum of 16 gauge. The vertical and horizontal snap on cappings shall cover the joints and partition edges, so as to provide, continuity to the complete partitions system.

1220x1050x72mm (hxcwt)

1220x750x72mm (hxcwt)

ANNEXTURE-1



Modular Workstation for staff

ANNEXTURE-2



Backdrop of ht 750mm



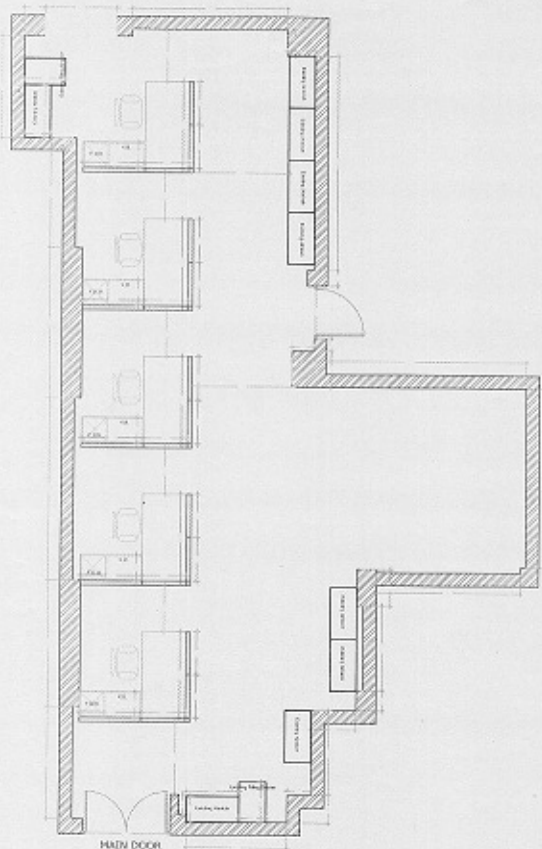
ANNEXTURE-3



Steel Cabinet with glass door

OPTION - 3

APC SECTION



NOT ALL COMMENTS ARE IN ORDER

PRODUCT TITLE:  
REPTONAL COLLIERE 20' FEMME  
ART. 1A99910022

**MaxConcT** (cont.)

REKORDY I WYKRESY  
WYKRESY I WYKRESY

Full Text at: <http://www.tandf.co.uk>  
 & Taylor & Francis Group

THEY'VE BEEN LOST

REMOVED FROM  
PASTORAL CARE[illegible]

EXERCISE ANSWERS

EXHIBIT 19.2 (continued)

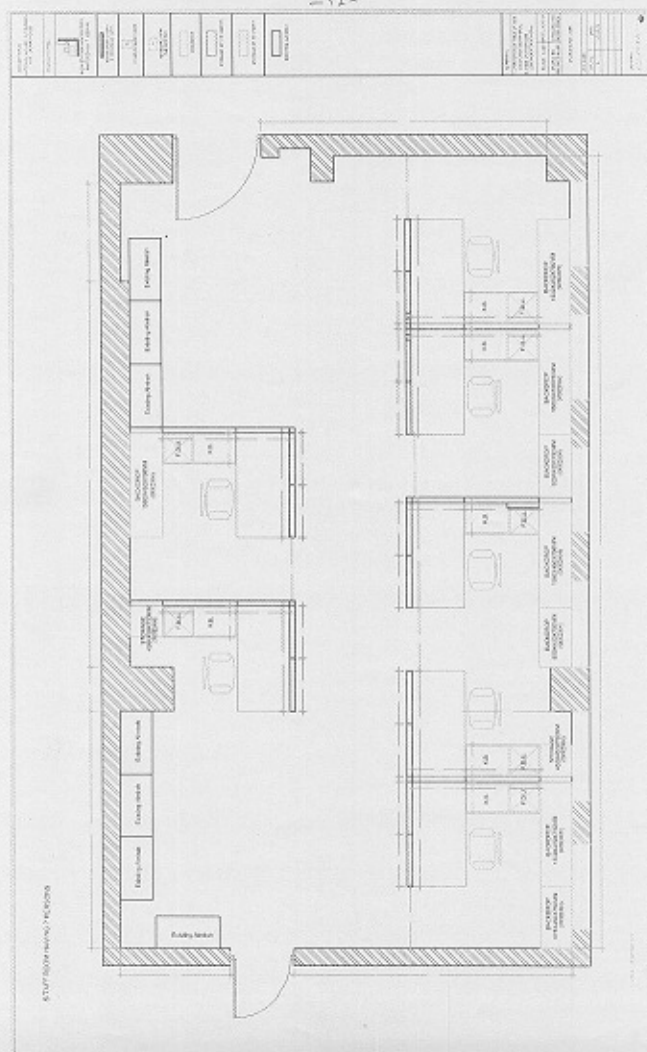
1. **WATER** 2. **WIND** 3. **WAVE** 4. **WAVE** 5. **WAVE** 6. **WAVE** 7. **WAVE** 8. **WAVE** 9. **WAVE** 10. **WAVE** 11. **WAVE** 12. **WAVE** 13. **WAVE** 14. **WAVE** 15. **WAVE** 16. **WAVE** 17. **WAVE** 18. **WAVE** 19. **WAVE** 20. **WAVE** 21. **WAVE** 22. **WAVE** 23. **WAVE** 24. **WAVE** 25. **WAVE** 26. **WAVE** 27. **WAVE** 28. **WAVE** 29. **WAVE** 30. **WAVE** 31. **WAVE** 32. **WAVE** 33. **WAVE** 34. **WAVE** 35. **WAVE** 36. **WAVE** 37. **WAVE** 38. **WAVE** 39. **WAVE** 40. **WAVE** 41. **WAVE** 42. **WAVE** 43. **WAVE** 44. **WAVE** 45. **WAVE** 46. **WAVE** 47. **WAVE** 48. **WAVE** 49. **WAVE** 50. **WAVE** 51. **WAVE** 52. **WAVE** 53. **WAVE** 54. **WAVE** 55. **WAVE** 56. **WAVE** 57. **WAVE** 58. **WAVE** 59. **WAVE** 60. **WAVE** 61. **WAVE** 62. **WAVE** 63. **WAVE** 64. **WAVE** 65. **WAVE** 66. **WAVE** 67. **WAVE** 68. **WAVE** 69. **WAVE** 70. **WAVE** 71. **WAVE** 72. **WAVE** 73. **WAVE** 74. **WAVE** 75. **WAVE** 76. **WAVE** 77. **WAVE** 78. **WAVE** 79. **WAVE** 80. **WAVE** 81. **WAVE** 82. **WAVE** 83. **WAVE** 84. **WAVE** 85. **WAVE** 86. **WAVE** 87. **WAVE** 88. **WAVE** 89. **WAVE** 90. **WAVE** 91. **WAVE** 92. **WAVE** 93. **WAVE** 94. **WAVE** 95. **WAVE** 96. **WAVE** 97. **WAVE** 98. **WAVE** 99. **WAVE** 100. **WAVE** 101. **WAVE** 102. **WAVE** 103. **WAVE** 104. **WAVE** 105. **WAVE** 106. **WAVE** 107. **WAVE** 108. **WAVE** 109. **WAVE** 110. **WAVE** 111. **WAVE** 112. **WAVE** 113. **WAVE** 114. **WAVE** 115. **WAVE** 116. **WAVE** 117. **WAVE** 118. **WAVE** 119. **WAVE** 120. **WAVE** 121. **WAVE** 122. **WAVE** 123. **WAVE** 124. **WAVE** 125. **WAVE** 126. **WAVE** 127. **WAVE** 128. **WAVE** 129. **WAVE** 130. **WAVE** 131. **WAVE** 132. **WAVE** 133. **WAVE** 134. **WAVE** 135. **WAVE** 136. **WAVE** 137. **WAVE** 138. **WAVE** 139. **WAVE** 140. **WAVE** 141. **WAVE** 142. **WAVE** 143. **WAVE** 144. **WAVE** 145. **WAVE** 146. **WAVE** 147. **WAVE** 148. **WAVE** 149. **WAVE** 150. **WAVE** 151. **WAVE** 152. **WAVE** 153. **WAVE** 154. **WAVE** 155. **WAVE** 156. **WAVE** 157. **WAVE** 158. **WAVE** 159. **WAVE** 160. **WAVE** 161. **WAVE** 162. **WAVE** 163. **WAVE** 164. **WAVE** 165. **WAVE** 166. **WAVE** 167. **WAVE** 168. **WAVE** 169. **WAVE** 170. **WAVE** 171. **WAVE** 172. **WAVE** 173. **WAVE** 174. **WAVE** 175. **WAVE** 176. **WAVE** 177. **WAVE** 178. **WAVE** 179. **WAVE** 180. **WAVE** 181. **WAVE** 182. **WAVE** 183. **WAVE** 184. **WAVE** 185. **WAVE** 186. **WAVE** 187. **WAVE** 188. **WAVE** 189. **WAVE** 190. **WAVE** 191. **WAVE** 192. **WAVE** 193. **WAVE** 194. **WAVE** 195. **WAVE** 196. **WAVE** 197. **WAVE** 198. **WAVE** 199. **WAVE** 200. **WAVE** 201. **WAVE** 202. **WAVE** 203. **WAVE** 204. **WAVE** 205. **WAVE** 206. **WAVE** 207. **WAVE** 208. **WAVE** 209. **WAVE** 210. **WAVE** 211. **WAVE** 212. **WAVE** 213. **WAVE** 214. **WAVE** 215. **WAVE** 216. **WAVE** 217. **WAVE** 218. **WAVE** 219. **WAVE** 220. **WAVE** 221. **WAVE** 222. **WAVE** 223. **WAVE** 224. **WAVE** 225. **WAVE** 226. **WAVE** 227. **WAVE** 228. **WAVE** 229. **WAVE** 230. **WAVE** 231. **WAVE** 232. **WAVE** 233. **WAVE** 234. **WAVE** 235. **WAVE** 236. **WAVE** 237. **WAVE** 238. **WAVE** 239. **WAVE** 240. **WAVE** 241. **WAVE** 242. **WAVE** 243. **WAVE** 244. **WAVE** 245. **WAVE** 246. **WAVE** 247. **WAVE** 248. **WAVE** 249. **WAVE** 250. **WAVE** 251. **WAVE** 252. **WAVE** 253. **WAVE** 254. **WAVE** 255. **WAVE** 256. **WAVE** 257. **WAVE** 258. **WAVE** 259. **WAVE** 260. **WAVE** 261. **WAVE** 262. **WAVE** 263. **WAVE** 264. **WAVE** 265. **WAVE** 266. **WAVE** 267. **WAVE** 268. **WAVE** 269. **WAVE** 270. **WAVE** 271. **WAVE** 272. **WAVE** 273. **WAVE** 274. **WAVE** 275. **WAVE** 276. **WAVE** 277. **WAVE** 278. **WAVE** 279. **WAVE** 280. **WAVE** 281. **WAVE** 282. **WAVE** 283. **WAVE** 284. **WAVE** 285. **WAVE** 286. **WAVE** 287. **WAVE** 288. **WAVE** 289. **WAVE** 290. **WAVE** 291. **WAVE** 292. **WAVE** 293. **WAVE** 294. **WAVE** 295. **WAVE** 296. **WAVE** 297. **WAVE** 298. **WAVE** 299. **WAVE** 300. **WAVE** 301. **WAVE** 302. **WAVE** 303. **WAVE** 304. **WAVE** 305. **WAVE** 306. **WAVE** 307. **WAVE** 308. **WAVE** 309. **WAVE** 310. **WAVE** 311. **WAVE** 312. **WAVE** 313. **WAVE** 314. **WAVE** 315. **WAVE** 316. **WAVE** 317. **WAVE** 318. **WAVE** 319. **WAVE** 320. **WAVE** 321. **WAVE** 322. **WAVE** 323. **WAVE** 324

[illegible]

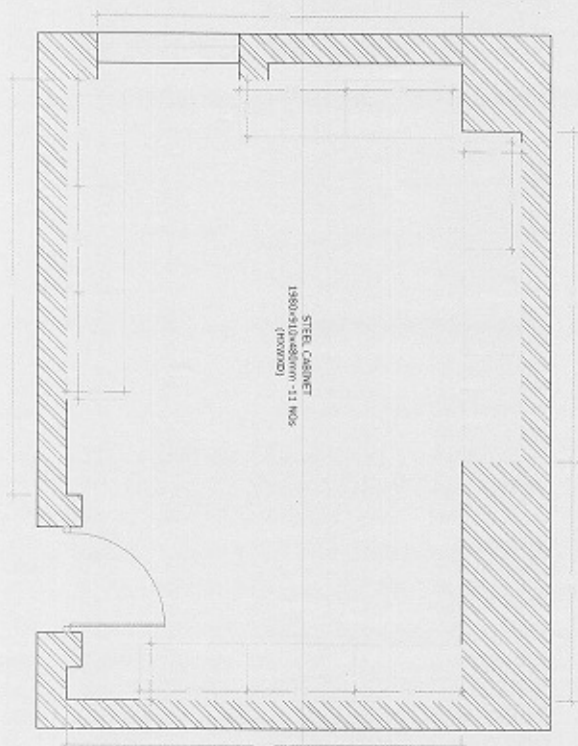
附 加 说 明 :

**COSMOS**





STORE ROOM HAVING STEEL CABINET FOR KEEPING ALBUMS



**Technical Bid**  
**Format for technical bid for supply and installation of furniture and workstation etc.**

1.	Name of the firm	:											
2.	Complete Address & Telephone number	:											
a.	Date of incorporation/Establishment of the firm	:											
b.	Telephone no. (s) contract person.	:											
c.	Fax no.	:											
d.	Email id	:											
e.	Website.	:											
3.	Whether the company is proprietorship firm owner/Director etc., be furnished	:											
4.	Pan no.	:											
5.	TIN No.	:											
6.	Sales Tax/Vat excise Registration No. and all other applicable Registration nos.	:											
7.	Profile of the firm	:	Attach a separate sheet alongwith brochure										
8.	Turnover of the company (Annual Turnover)	:	<table border="0"> <tr> <td>Year</td> <td>Annual Turnover</td> </tr> <tr> <td>2011-12</td> <td>: Rs. _____</td> </tr> <tr> <td>2012-13</td> <td>: Rs. _____</td> </tr> <tr> <td>2013-14</td> <td>: Rs. _____</td> </tr> <tr> <td colspan="2">(Attach attested copies of balance Sheets/profit &amp; loss A/cs. For the last 3 years)</td> </tr> </table>	Year	Annual Turnover	2011-12	: Rs. _____	2012-13	: Rs. _____	2013-14	: Rs. _____	(Attach attested copies of balance Sheets/profit & loss A/cs. For the last 3 years)	
Year	Annual Turnover												
2011-12	: Rs. _____												
2012-13	: Rs. _____												
2013-14	: Rs. _____												
(Attach attested copies of balance Sheets/profit & loss A/cs. For the last 3 years)													
9.	Infrastructure facilities	:											
a).	Office space available in Sq. ft.	:											
b).	Details of workshop manufacturing facilities with powder coating.	:											
c).	Manpower details (Attach organization chart)	:											
10.	Whether statement showing the work undertaken previously is attached.	:											
11.	Whether copy of pollution control certificate is attached.	:											
12.	Whether the Declaration that the Tenderer has not been black-listed is attached.	:											
13.	Earnest money deposit	:	Attach Demand Draft (Pay Order)										
a).	Demand Draft No.	:											
b).	Date	:											
c).	Drawn on	:											
d).	Rupees in figure & words	:	Rs. _____ (Rupees) _____										

Place :  
Date :

Signature : \_\_\_\_\_  
Name & Address with seal  
\_\_\_\_\_

Price Bid

Staff Room having 7 Persons

S.No	Description	Unit	Qty.	Unit Rate	Total Amount
1	<b>Modular Workstations for 7 persons</b>				
a.	Worktop of size 1500x750x25mm (wxdxh) made of 25mm prelaminted particle board duly edge banded with fitting	Nos.	7		
b.	Side unit of size 1050x450x750mm (wxdxh) having top made of 25mm prelaminted particle board duly edge banded & Base in 18mm prelaminted particle board duly edge banded. It has three drawer unit	Nos.	7		
c.	Keyboard with channel.	Nos.	7		
d.	Gable end in 18mm prelaminted particle board duly edge banded.	Nos.	7		
e.	Vertical modular partition panel laminated of 72mm thick and 1220mm ht				
	1220x1050x72mm (hwxht).	No.	5		
	1220x750x72mm (hwxht).	Nos.	19		
	1220x450x72mm (hwxht).	Nos.	5		
2	Backdrop having top made of 25mm prelaminted particle board duly edge banded and base made of 18mm prelaminted particle board duly edge banded with Plb shutters.				
	750x450x1450mm.	No.	5		
	900x450x750mm.	No.	3		
	450x450x750mm.	No.	2		
<b>Total</b>					-

## Store

S.No	Description	Unit	Qty.	Unit Rate	Total Amount
3	<b>Steel Cabinet</b> Steel Cabinet 1980x910x480mm (78"x36"x19") with four fixed shelves and transparent glass doors, body will be of 0.8mm thick. The door shall be of 1.25mm thick with transparent glass lock of 6 levers with stainless steel key fabricated in modernised workshop.	Nos.	11		
Total					-



## option-3 (A/C Section)

S.No	Description	Unit	Qty.	Unit Rate	Total Amount
4	<b>Modular Workstations for 5 persons</b>				
a.	Worktop of size 1500x750x25mm (wxdxh) made of 25mm prelaminted particle board duly edge banded with fitting	Nos.	5		
b.	Side unit of size 1050x450x750mm (wxdxh) having top made of 25mm prelaminted particle board duly edge banded & Base in 18mm prelaminted particle board duly edge banded.It has three drawer unit	Nos.	5		
c.	Keyboard with channel	Nos.	5		
d.	Gable end in 18mm prelaminted particle board duly edge banded	Nos.	5		
e.	Vertical modular partition panel laminated of 72mm thick and 1220mm ht				
	1220x1050x72mm	Nos.	5		
	1220x750x72mm	Nos.	15		
				Total	-

